

Dear Delegate,

You have the option of selecting from a wide range of comfortable deluxe hotel at a special room rates To enjoy the wonderful stay in Delhi, select one of the hotel as mentioned below.



Hotel Accommodation in Delhi

- **Hotel Ashok**

Access: No hotel symbolizes the traditional grandeur and hospitality of the historic capital of India more than the Ashok, the foremost of Delhi's 5-star hotels and the flagship of the Ashok Group. Set in a prime location of Delhi's Diplomatic Enclave. It is 15 Km from IGI airport & 12 Km from Domestic Airport. It is only 10 minutes away from the venue, FICCI Auditorium

Rooms: The hotel has 550 well appointed rooms, with 60 executive suites, 40 double suites, 10 deluxe suites and a Presidential suit.

Room Tariff

Standard Room : USD 177 + 12.5% tax (USD 25) : total USD 190

Double Room : USD 225 + 12.5% tax (USD 30) : total USD 255



- **Hotel Inter-Continental**

[TOP](#)

Access : Intercontinental Hotel Grand located in the city's main business and shopping districts of Connaught Place within easy reach of all major government offices, the financial district, theatre areas, International trade fair grounds. It is also within close proximity to historical landmarks like India Gate, Purana Qila, Jama Masjid and Red Fort and the venue FICCI Auditorium



Rooms : Accommodation of Intercontinental Hotel Grand is available in four distinct categories which offer an array of choices that ensures there is an accommodation style to suit each guest. All 444 rooms of Intercontinental Hotel Grand have an underlying emphasis on luxury and space and are fitted with the latest in modern facilities and services – ensuring the modern day travellers' every comfort.



Room Tariff

Standard Room : USD 250+ 12.5% tax (USD 32) : total USD 282

Double Room : USD 275 + 12.5% tax (USD 35) : total USD 310

- **Hotel Le Meridien**

Access: The Hotel is located at Windsor Place, Janpath, one of the most focal points of the city. It is constructed on a 4.29-acre plot, and is 17 kilometers from the Domestic Airport and 23 kilometers from the International Airport. It is 2.5 kilometers from New Delhi Railway Station.



Rooms : The hotel's exquisitely designed 355 guestrooms include 7 tastefully decorated designer suites, 54 exclusive Club President rooms and 44 well-appointed deluxe suites to suit guest's requirements



Room Tariff

Standard Room : USD 260 + 12.5% tax (USD 33) : total USD 293

Double Room : USD 275 + 12.5% tax (USD 35) : total USD 310

- **Hotel Shangri – la**

[TOP](#)

Access: Set amidst beautiful landscaped gardens, with superb recreational and business facilities the Shangri-La Hotel, New Delhi , provides a welcoming utopian retreat for the world- weary traveller. This elegant oasis nestled within the heart of New Delhi's bustling metropolis remains faithful to the legendary Shangri-La that once inspired its name.



Rooms : Down town high rise hotel with 70 rooms & Roof top Coffee shop with some excellent views of New Delhi, Business center, Bar No swimming pool

Room Tariff

Standard Room : USD 260 + 12.5% tax (USD 40) : total USD 300

Double Room : USD 275 + 12.5% tax (USD 35) : total USD 319



- **Hotel Hans Plaza**

[TOP](#)

Access: Hotel Hans Plaza is a boutique hotel strategically placed in the heart of the capital city of New Delhi. Located in Connaught Place, the business & commercial district, the hotel stands at the juncture where the two distinct faces of Delhi meet. The first is that of historic and charismatic Old Delhi, where seven ancient cities combine to form the present .The other facet is the fast paced work culture, and the bustling vibrancy of the new metropolis

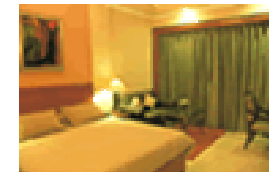


Rooms : Down town high rise hotel with 70 rooms & Roof top Coffee shop with some excellent views of New Delhi, Business center, Bar No swimming pool

Room Tariff

Standard Room : USD 135 + 12.5% tax (USD 23) : total USD 158

Double Room : USD 150 + 12.5% tax (USD 26) : total USD 176



[TOP](#)

- **Hotel Qutub**

Access: Hotel offers a perfect setting for a luxurious stay in the bustling industrial and institutional area. The bustling towers dominates the surrounding the hotel also offer a superb view of the Qutub Minar . A sportsman’s haven, the Qutab has a swimming pool, tennis courts and a four-lane semi-automatic bowling alley. It is only 15 km from the international , domestic airport & Railway Station. The hotel is only 12 kms form the venue, FICCI Auditorium.



Rooms: Hotel offers a total of 62 rooms, one suite and 30 service apartments. All the rooms are centrally air conditioned and offer individual temperature control. The rooms have color TV, telephone and channel music. All the modern amenities that are expected are available .



Room Tariff

Standard Room : USD 178 + 12.5% tax (USD 22) : total USD 200
Double Room : USD 185+ 12.5% tax (USD 23) : total USD 208

- **Hotel Taj Palace**

Access: The Taj Palace Hotel, New Delhi is a perfect embodiment of all qualities synonymous with the quality of Taj Hotels, Resorts & Palaces. Located 14 km from the international airport. It has 12 banquet halls to cater parallel sessions requirements, 4 restaurants and 2 bar & have internet facility in all its rooms.



Room Tariff

Standard Room : USD 300 + 12.5% tax (USD 38) : total USD 338
Double Room : USD 350 + 12.5% tax (USD 44) : total USD 394



Terms & conditions:

breakfast

- All room rates are on per room / per night basis and
- Taxes are charged on the published room tariff as on date.
- Check -in and Check out time : 12 Noon
- One night room rent has to be paid in advance by 10th Nov.,2006 through our online payment service

available at www.alpcord.com/payment.html , or through Demand Draft favoring “ **Alpcord Network Events &**

Conference management Company Pvt. Ltd.” Or by money transfer.

**For further query , kindly
contact:-**

Mr. Biswash Joshi

Ass. Manager

Mobile : 91-98717-94731

Off : Ph. 91-11-2616 5026 /

91-11-4145 8337

Fax : 91-11-2616-5024

Email : summit@alpcord.net